

MARCO MULTISYSTEM Series

MT-M-7

Salient features

- Magnetic tracklight for DC 48V systems
- Suitable for use in architectural, retail or food applications
- Made specifically for A.A.G. Stucchi MULTISYSTEM
- Made using International standard: Zhaga compliant components
- DALI-2, 1-10V, ON/OFF dimming options.
- Tunable White, Dim to Warm & CRI>97 available on request.



Aesthetically pleasing!

Made for
A.A.G. Stucchi
MULTISYSTEM

Electronic control gear from **Helvar**

1-10V
DALI
Wireless

CRI > 80
CRI > 90
CRI > 97

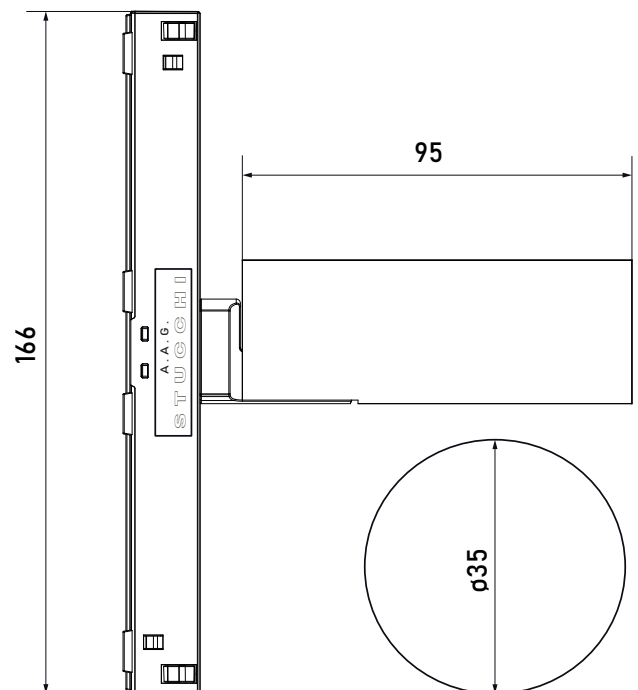
Functional Description

7 W track spotlight with adapter for installation on 48V DC electrified track. High lumen output with no flicker having correlated color temperature of following options: 27/30/40/5000K. The available beam angles are 20°. Electronic LED Driver to step down DC48V is integrated in the product. Luminaire is made of die cast aluminium. Luminaire has the ability to rotate 350° about vertical axis and 120° tilting relative to horizontal plane. Luminaire is made with Zhaga compliant components from Europe and has options for DALI-2 or 1-10V dimming.

Technical Data

Load Wattage	7 W
Input Voltage	48V DC
Beam Angle	20°
Luminous Flux	451 lm (± 200)
Color Temperature	3000 / 4000 K others available on request
Colour Rendering Index	80 / 90
Dimming Protocols	DALI / 1-10 V / non-dim / Wireless
Dimensions	D35 H124 mm
Finish	Black / White

Dimensions



MARCO MULTISYSTEM Series

MT-M-7



Electronic control gear from



Made for A.A.G. Stucchi
MULTISYSTEM
Systems



1-10V
DALI
Switch-Dim
Wireless

CRI > 80
CRI > 90
CRI > 97

0, 1/ Prefix & Wattage
MARCO MULTISYSTEM Series

MT-M-7

2/ Color Temperature

303 3000 K

403 4000 K

3/ Color

B Black embossed

W White embossed

4/ Beam Angle

20 20°

5/ Dimming Protocol

DALI DALI

1-10 1-10

x ON/OFF

Examples

MT-M-7/303/B/20/DALI
7 W, 3000K @ CRI80, Black color, 20°, DALI

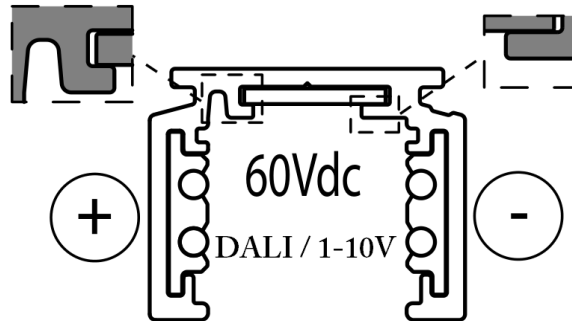
MT-M-7/303/B/20/1-10
7 W, 3000K @ CRI80, Black color, 20°, 1-10V

MT-M-7/303/B/20
7 W, 3000K @ CRI80, Black color, 20°, ON/OFF

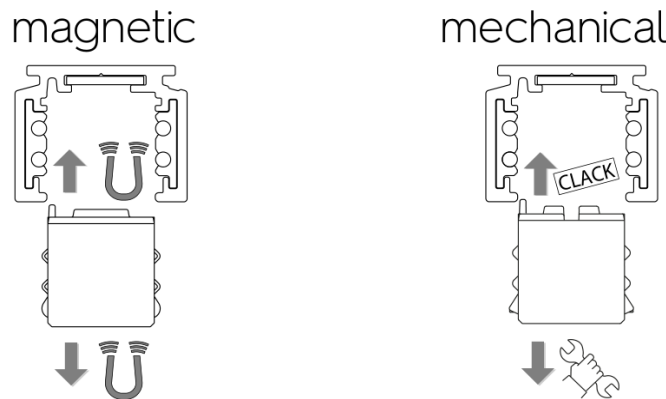
Further customizations of this product is possible.
Please get in touch with us for any bespoke requirements.

Installation Instructions

1. The MULTISYSTEM track is a Class III - SELV product. The supply voltage must be between 0 and 60 VDC and the supply current must not exceed 15 A. The operating temperature must not exceed 70°C. The 4 track conductors can be used to create two separate power supply circuits, or one circuit for the power supply and one for the DATA BUS. It is forbidden to use control gear, drivers, DATA BUS systems and components that are not SELV-approved and/or with U-OUT greater than 60 VDC.



2. If in an installation the track system is being integrated with a larger lighting control system by electrically merging the DATA BUS of the low-voltage track with that of other light fittings, all components used must be SELV-approved.
3. There are two types of adaptors: the non-polarised version (without mechanical key) and the polarised version (with mechanical key on the left, can also be on the right for some models). If polarised adaptors are used, it is important to respect the wiring inside the item and to be very careful when inserting the end power feed into the track.



4. Once inserted with the key properly oriented, the luminaire must lie perfectly flush with the track without protruding, and the key must not interfere with the track.

