

Simplicity



CITILED AC Series New IC Type

230V Model

AC driving COB with Original IC

Simple luminaire designing is available

Compact AC driving COB doesn't need big size driver and enhance design flexibility.

Various control and functions

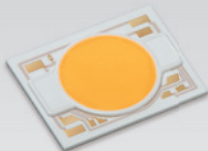
Writable IC program of driving current and offer the desired LED. Thermal De-rating Control is available by IC. Improved dimming performance and supporting Triac & 0-10V analog dimmers.

Hot binning

3-Step MacAdam ellipse at hot binning.



CLC241

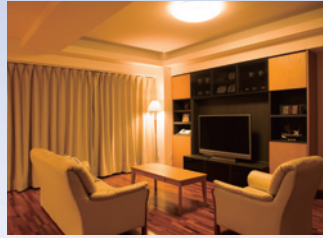


CLC251

Application



Exterior lighting



Interior lighting

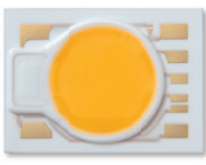
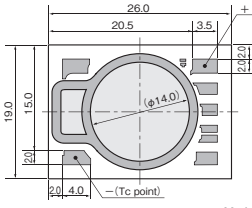

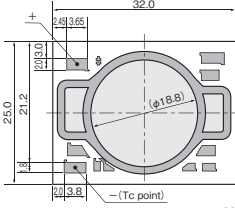


Track light/ Spot light



Outdoor lighting

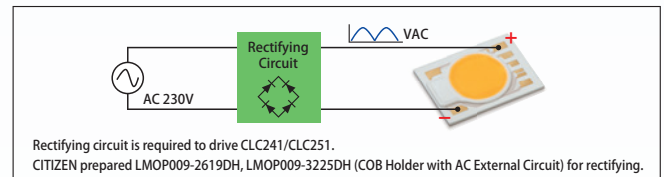
Outline Drawings

Appearance (Actual size)	Outline drawing	Appearance (Actual size)	Outline drawing
CLC241  19.0×26.0 mm	 Unit:mm	CLC251  25.0×32.0 mm	 Unit:mm

Color Variations

Shape	Voltage model	Ra80 Min. (3-step MacAdam ellipse)	
		3,000K	
CLC241	230V Model		●
CLC251			●

Application Circuit



Product List 230V Model

(Tc = 65°C)

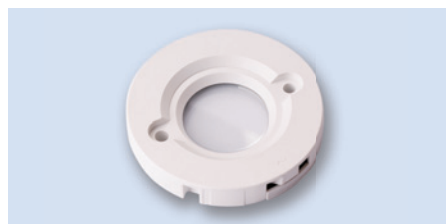
Shape	Product code	CRI	CCT	VAC (V)	Input power Typ. (W)	Luminous flux Typ. (lm)	Luminous efficacy Typ. (lm/W)
CLC241 ^{New}	CLC241-07075303M1xxxx	80 Min.	3,000K	230	7.1	750	106
	CLC241-09100303M1xxxx				9.6	1,000	104
CLC251 ^{New}	CLC251-13150303M1xxxx	80 Min.	3,000K	230	13.2	1,500	114
	CLC251-18200303M1xxxx				18.3	2,000	109

* Please contact our sales team regarding the specifications for other CRI and CCT .
* Product names and specifications in this brochure are subject to change without notice. Please contact our sales team in terms of release date and latest specifications for each product.

Option Parts

COB Holder with AC External Circuit ^{New}

- LMOP009-2619DH:for CLC241
- LMOP009-3225DH:for CLC251



Contacts

Sales Offices

- Europe
C-E (DEUTSCHLAND) GMBH. — Tel : +49-69-2992-4810
- North America
CECOL, INC. — Tel : +1-847-619-6700
- Japan — Tel : +81-3-3493-2744

- Asia/ Hong Kong/ China (South China)
C-E (HONG KONG) LTD. — Tel : +852-2793-0613
- China (East China/ North China)
CITIZEN ELECTRONICS (CHINA) CO., LTD. — Tel : +86-21-6295-5510
- Other areas — inquiry@ce.citizen.co.jp

Distributors http://ce.citizen.co.jp/productse/sales_network.php

Requests / Inquiries E-mail:inquiry@ce.citizen.co.jp

CITIZEN and CITIZEN Micro HumanTech are trademarks or registered trademarks of CITIZEN HOLDINGS CO., LTD. JAPAN. CITED is a trademark or a registered trademark of CITIZEN ELECTRONICS CO., LTD. JAPAN.

CITIZEN ELECTRONICS CO., LTD. JAPAN

1-23-1, Kamikurechi, Fujiyoshida-shi, Yamanashi-ken 403-0001, Japan Tel:+81-555-23-4121 <http://ce.citizen.co.jp/e/>

Ref.CE-P3684 04/16